



CUBEFUSER®

DIFFUSION PANEL

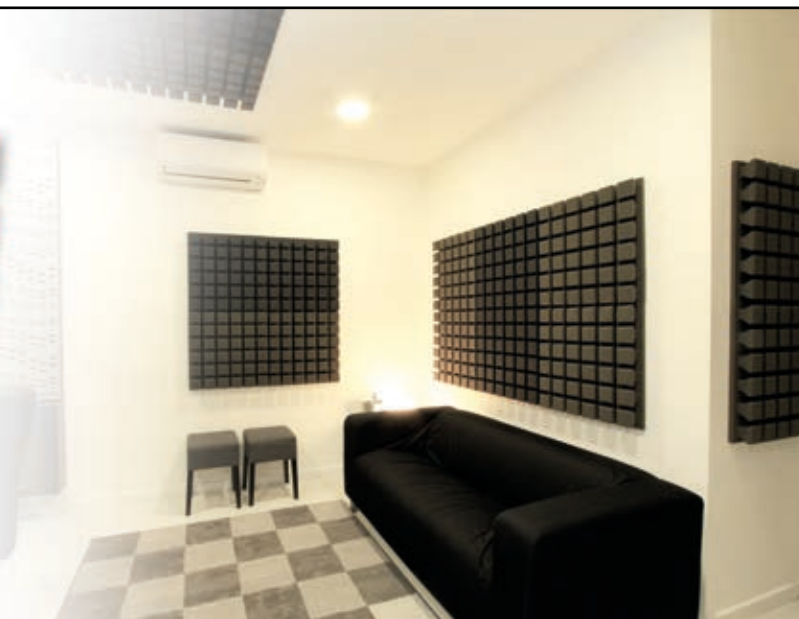
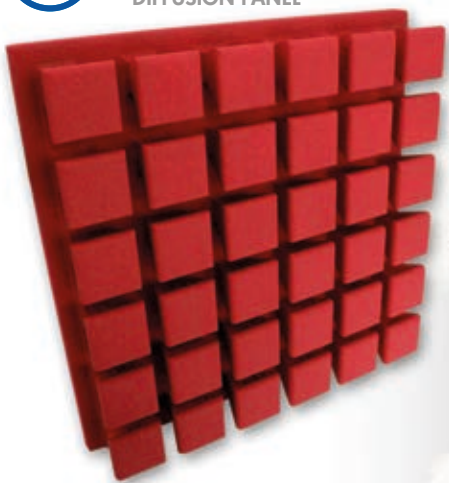


Image of 60x60cm model Ref.:CUF060 (on the left) and Ref.:CUF060 applied (ambient image).

DESCRIPTION

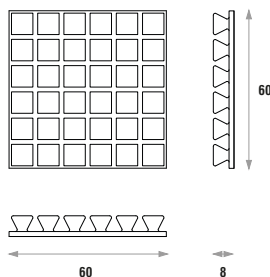
The CUBEFUSER® acoustic panel is one of the least expensive diffusers from our brand. It is cubic-shaped and is made of high-quality 100% recyclable ecologic EPS raw material.

This model can be combined with the CUBESORB®; as a result, two different acoustic areas keep maintaining the same shape.

The CUBEFUSER® offers associate absorption, because the uniformly protruding cubes make the sound to enter directly into the concavities. This diffuser offers uniform unidirectional diffusion and provides an attractive design to ceilings and walls.

It is a cost-effective diffusion panel as an alternative to other more expensive diffusers.

TECHNICAL DRAWINGS



FEATURES

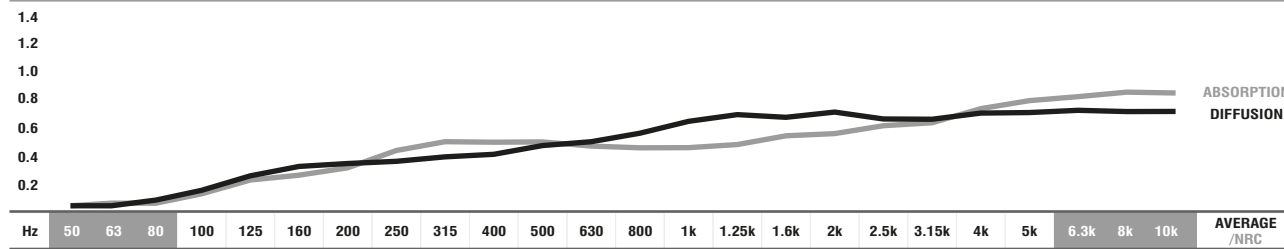
- Average diffusion: **0.50/m²** [$>100\text{Hz}; <5\text{KHz}$].
- NRC: **0.47/m²** [$>100\text{Hz}; <5\text{KHz}$].
- Fire resistance: Euroclass B-s3,d1 (similar to old M1).
- Very easy to install.
- Other colours available upon consultation.

MODELS AND SIZES

MODELS	HEIGHT	WIDTH	DEPTH	WEIGHT
CUF060	60 cm	60 cm	8 cm	0.5 Kg

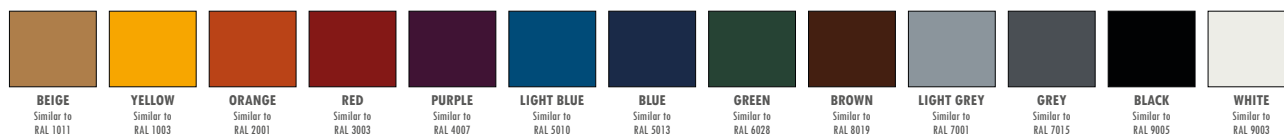
DIFFUSION - ABSORPTION COEFFICIENT

	0.04	0.04	0.09	0.16	0.25	0.32	0.34	0.36	0.39	0.40	0.44	0.49	0.55	0.63	0.67	0.66	0.68	0.65	0.65	0.68	0.70	0.71	0.70	0.70	0.50
α_S	0.05	0.06	0.08	0.14	0.22	0.28	0.33	0.44	0.49	0.48	0.48	0.47	0.46	0.46	0.49	0.53	0.55	0.60	0.63	0.70	0.77	0.80	0.83	0.82	0.47



■ ABSORPTION COEFFICIENT: Values in accordance with the standards: EN 20654, ASTM C423 and EN 11654. ■ Values [$<100\text{Hz}$ and $>5\text{K}$] are Non Standard Values.
 ■ DIFFUSION COEFFICIENT: These values were obtained by mathematical calculations and tests carried out in our laboratory.

STANDARD EPS RAL COLOURS



IMPORTANT NOTICES

- JOCAVI® accepts no responsibility for any printing errors. Specifications can be modified without prior notice, if technical or commercial reasons so require.
- RAL® is an international independent colour standard system partner for industry, trade, architecture and design. Should be consulted before placing any order.
- The colours shown on this catalogue are only a reference and an illustration of the products finishing. The colours shown are not binding because brightness, contrast and colour balance may vary due to the printing process.
- Colours may vary due to raw-material suppliers' changes and some differences may occur in tonal range.
- Typical Indoor Comfort Standards state a temperature range of 20°C - 27°C (68°F - 81°F), and a relative humidity of less than 60%. These would be considered as normal operational levels of JOCAVI® products' range.
- Sizes may vary slightly (+/-3mm) due to their production method and some inherent raw-materials characteristics.

